

Cambridge  
International  
AS & A Level

**Cambridge Assessment International Education**  
Cambridge International Advanced Subsidiary and Advanced Level

---

**GEOGRAPHY**

**9696/22**

Paper 2 Core Human Geography

**October/November 2019**

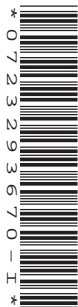
INSERT

**1 hour 30 minutes**

---

**READ THESE INSTRUCTIONS FIRST**

This Insert contains all the resources referred to in the questions.

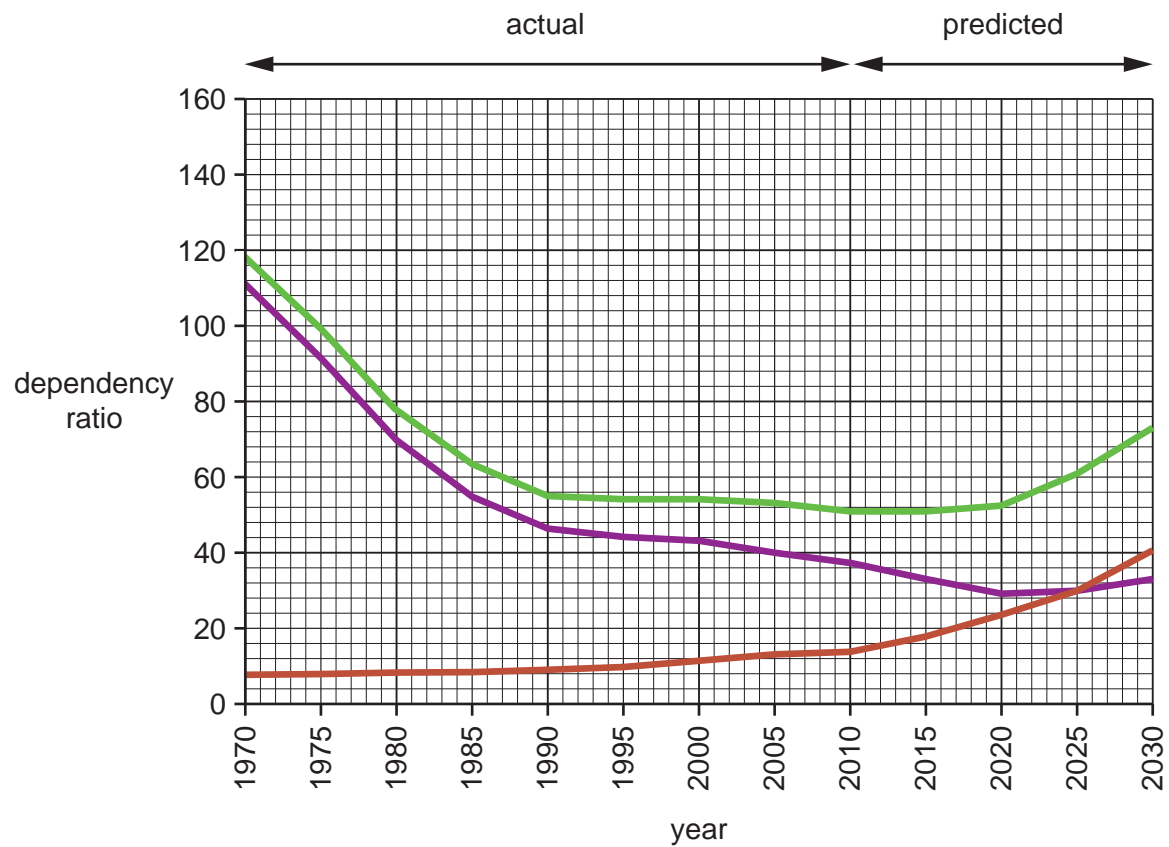


---

This document consists of **4** printed pages.

Fig. 1.1 for Question 1

## Dependency ratios in Singapore, an HIC city state in Southeast Asia, 1970–2030

**Key**

- total dependency ratio
- youth dependency ratio (aged under 15 years)
- aged dependency ratio (aged over 65 years)

Table 2.1 and Fig. 2.1 for Question 2

Impacts of remittances\* from rural-urban migrants on Imo and Abia, two states in Nigeria, an MIC in West Africa, 2012

state/district	impacts of remittances		
	low	moderate	high
Imo North	●		
Imo East			●
Imo West	●		
Abia North		●	
Abia Central		●	
Abia South		●	

\*Remittances of money, cloth and food were measured.

Table 2.1

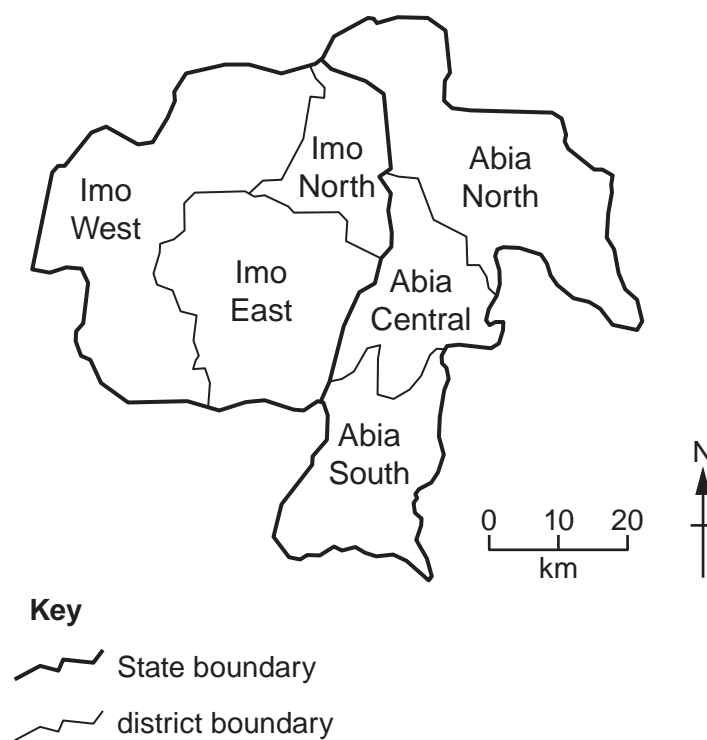
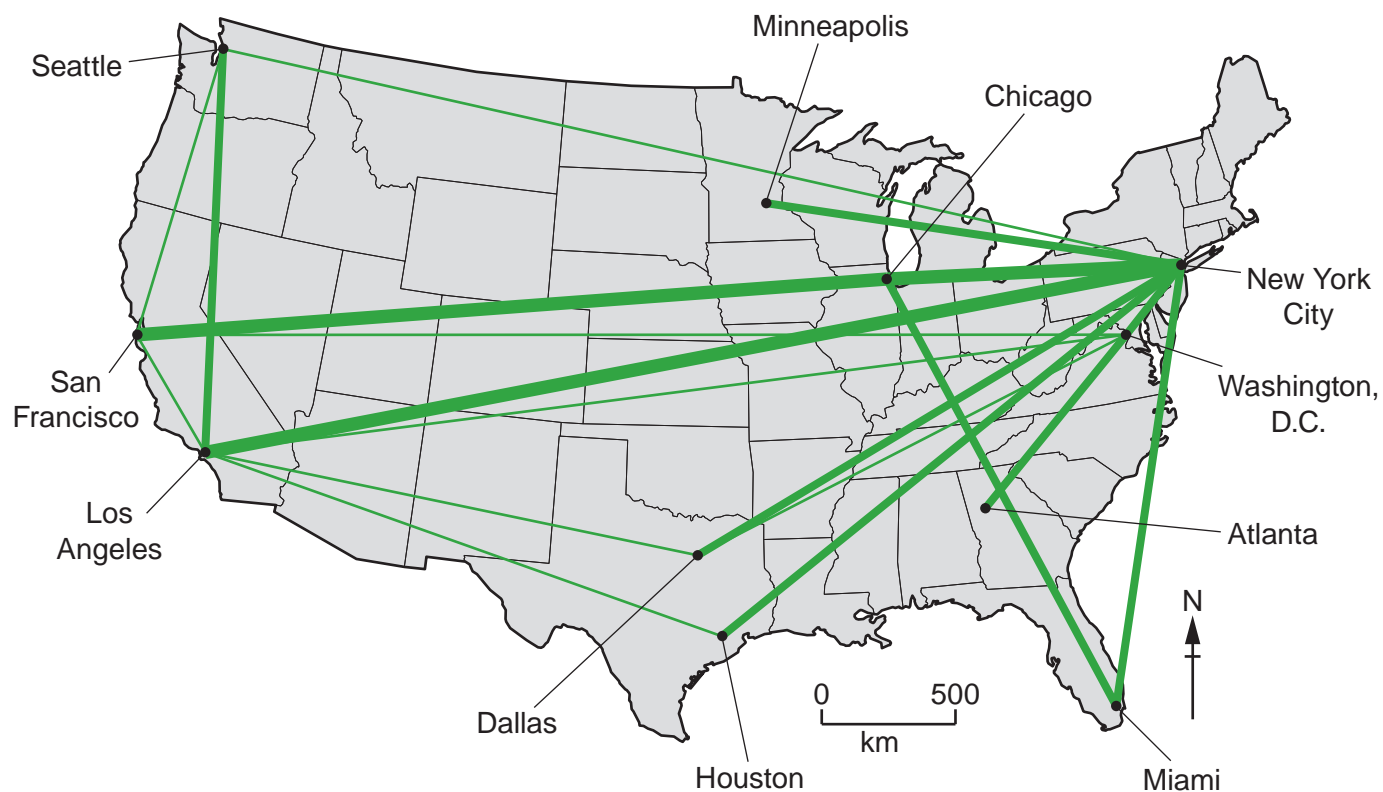


Fig. 2.1

Fig. 3.1 for Question 3

Hierarchy of world cities in the USA, an HIC in North America, based on business air travel



The greater the number, width and density of flow lines, the more important the world city.

Permission to reproduce items where third-party owned material protected by copyright is included has been sought and cleared where possible. Every reasonable effort has been made by the publisher (UCLES) to trace copyright holders, but if any items requiring clearance have unwittingly been included, the publisher will be pleased to make amends at the earliest possible opportunity.

To avoid the issue of disclosure of answer-related information to candidates, all copyright acknowledgements are reproduced online in the Cambridge Assessment International Education Copyright Acknowledgements Booklet. This is produced for each series of examinations and is freely available to download at [www.cambridgeinternational.org](http://www.cambridgeinternational.org) after the live examination series.

Cambridge Assessment International Education is part of the Cambridge Assessment Group. Cambridge Assessment is the brand name of the University of Cambridge Local Examinations Syndicate (UCLES), which itself is a department of the University of Cambridge.